

QueryVision Guide to Installing and Configuring IBM Cognos Analytics 11

Detailed History of Changes

Ver.	Date	Who	Detailed description of Changes
1.0	11Aug2016	NJT	Created
1.1	21Oct2016	NJT	Updated for 11.0.4/11.0.05

Table of Contents

1.	HIGHLIGHTS	1
2.	WHY THIS DOCUMENT?.....	2
3.	PLANNING.....	2
3.1	Architecture Changes	2
3.1.1	Integration Changes	2
3.1.2	Authentication Changes.....	2
4.	INSTALLATION	3
4.1	Installation component and option changes	3
5.	CONFIGURATION.....	4
5.1	SSO with IIS.....	4
5.2	Content Manager	6
5.2.1	JDBC driver for CM and Report Queries vs. CAP	6
6.	SAMPLES	6
7.	LEGACY TOOLS AND A PORTAL	7
7.1	Legacy Client tools	7
7.2	Legacy Portal	8
8.	POWERPLAY INTEGRATION WITH ICA 11	10
8.1	Known Issues	13
8.1.1	Administration Console for PowerPlay	13
9.	CHANGES TO MULTI-SERVER INSTALLATION	13
9.1.1	Server start order.....	14
10.	A WORD ON THE SDKS	14
11.	USEFUL LINKS.....	15
12.	11.0.4/11.05 CHANGES	16
12.1	Issues with Report Images and HTML Saved Outputs	18

1. HIGHLIGHTS

The following are issues, tips and tricks that QueryVision encountered when planning, installing, configuring and working with IBM Cognos Analytics 11 (ICA 11).

- A Gateway is optional, but required for SSO with IIS and for integration with 3rd party (web) applications.
 - ◊ The Gateway configuration for SSO with IIS requires a reverse proxy. Unlike 10.x users need different URLs for SSO vs. Challenge/Response logon.

We provide pointers to online documentation on the SSO install/config, including additional tips and tricks we found
- The installation options have changed including Ready to Run! option which includes a web server, CM database and authentication server.
 - ◊ To use the Gateway requires using the “custom” installation option which requires setting up SQL Server or other supported production database type for Content Manager
- New Installer/Update strategy
 - ◊ Fix Packs are no longer used, the new installer will install an update or full install.
 - ◊ IBM is currently not providing a public/online release schedule for updated versions of ICA 11. Subscribe to IBM My Notifications for announcements on when releases and updates occur (<https://www.ibm.com/support/mynotifications>)
 - ◊ Updating an existing ICA 11 installation may remove customer added files anywhere under the base (analytics) folder and replace customer edited files with the exception of the configstart.xml file and drivers placed in the new “drivers” folder.
- Legacy Clients – Analysis Studio, etc. are still available and are enabled with the “Custom” install option, but disabled with the “Ready to Run!” option. We show you how to enable manually.
- Legacy Portal – access to the 10.X Cognos Connection portal is still available via a different URL – we show you how to enable this feature.
- Integration with PowerPlay (IC 10.2.2 release) – installation and configuration of PowerPlay server (10.2.2) to work with ICA 11 requires a specialized workflow compared with IBM Cognos BI 10.2.2. Existing Technotes and installation information may be missing some critical steps and configuration updates.
- Changes on Multi-Server Installation – The workflow for expanding a single server ICA 11 installation, the integration of PowerPlay or a new multi-server installation have some critical steps which are new for ICA 11. Existing Technotes and installation information may be ambiguous.
- While the SDKs provided with ICA 11 are labelled as 10.2.2 they have actually been updated for ICA 11 with additional classes and properties for existing classes. New APIs and other major changes will be in a later release
- Useful links – other ICA 11 information we found useful

2. WHY THIS DOCUMENT?

IBM Cognos Analytics 11 brings major changes and those changes are being rolled out and updated on continual basis.

In developing support for IBM Cognos Analytics 11 (ICA 11), QueryVision discovered that there are some significant changes to CA 11 compared with IC 10.X which impact planning, installation and configuration at several levels of deployment:

- Stand-alone ICA 11 (11.0.3)
- ICA 11 with PowerPlay Server (IC 10.2.2)
- ICA 11 deployment for integration with SharePoint – which applies to QueryVision’s **SharePoint Web Parts for IBM Cognos** and **Custom Authentication Provider** solutions

We have captured URL links to IBM and 3rd party documentation, tips and tricks, plus our own observations and detailed discoveries which we found essential to creating and understanding a robust CA 11 deployment that is compatible with SharePoint – or any 3rd party application with embedded CA 11 components

The latest versions of this guide can be found on the queryvision.com web site:

- [QueryVision Guide to Installing and Configuring Cognos Analytics 11](#)

3. PLANNING

3.1 Architecture Changes

The architecture changes for CA 11 are:

- Authentication: Changes to the Gateway interface for Single Sign On with IIS
- Integration with 10.X versions of PowerPlay and other BI components vs. upgrading the 10.X versions to 11.X

3.1.1 Integration Changes

While IC 10.X had different installations for the BI platform, PowerPlay, Metrics servers and the various client tools, the server components either installed under a single root folder and presented a single Cognos Configuration interface for all IC 10.X components installed on the same machine.

With ICA 11, each of the CA 11 server, SDK, Samples are installed to a different root folder. All ICA 11 components now use a different installation technology – InstallAnywhere - which has a number of impacts.

Some separate servers (PowerPlay, Metrics), have not yet been updated to this new installer/architecture, but IBM has announced support for how to integrate these servers using 10.2.2 versions of the components with ICA 11 – although the detailed installation and integration documentation has not yet been released.

Note that legacy client tools available by the “companion” UI path – such as Metric Studio and Power Play Studio – will not be available until their associated server component(s) are installed and configured.

3.1.2 Authentication Changes

IBM has introduced a “micro service” – Glass – to the application tier which allows access without a gateway. IBM states that there cases where a Gateway is still required:

- Single Sign On with IIS (or in many other SSO configurations)
- Integration with 3rd Party Portals (which includes effectively all [web] applications which embed Cognos – including SharePoint and WebSphere.
- External Gateway – where ICA 11 is publically available, external to a firewall
- Web-based Distributed Authoring and Versioning(WebDAV) - Any report author initiated image browsing functionality.

For many customers, a Gateway will still be a requirement. Certainly our customer base either uses SSO or SharePoint or both.

What is different is using a Gateway with IIS requires a reverse proxy setup, plus different gateway URL configuration for Authentication vs. using embedded URLs – which in the past were a single URL.

For more details, see the installation and configuration sections, below.

4. INSTALLATION

With IBM Cognos Analytics 11, there is a new installation tool (InstallAnywhere) and new approach to updates which Administrators should be aware of.

- **Components with separate installations must be installed in separate sub-folders.**
- **Fix Packs no longer exist.** If there is an update IBM issues a new installation version (e.g. 11.0.1, 11.0.2, 11.0.3) which will either install a full installation or provide an update to an existing installation
- **User added or modified files and folders** - Where Cognos 8.X and 10.X uses fix packs to update a base installation, ICA 11 provides an installation package that will either do a new install of the latest release or an update to an existing installation.

In addition, the policy on what user added or modified folders and files under the IBM Cognos install folder will be preserved on an update has been tightened considerably compared with IBM Cognos 10.X and 8.X

While it is understood that these policies will be published sometime in the future, the bottom line is: assume that other than the cogstartup.xml and the new <install folder>\drivers folder, any folders or files that are added or modified may be removed or overwritten on an ICA 11 update.

For example, QueryVision adds folders/files to the following folders that were left intact on Fix Pack updates for 10.X that are now overwritten or removed on ICA 11 releases:
..\configuration, ..\webapps\p2pd\WEB-INF\lib and ..\webcontent

Uninstall – assume that all user added or modified folders or files will be removed

- **PowerPlay** (and possibly other 10.X servers) have a different separate installation workflow (see PowerPlay Integration with ICA 11 later in this document).

4.1 Installation component and option changes

ICA 11 comes with 3 different options for installation:

- Ready to Run!

ICA 11 comes with a default web server (WebSphere Liberty), Authentication Server (Apache Directory Server) and changed default Content Manager database (Informix 12.10 replacing Derby).

With these components no third party components (e.g. SQL Server for Content Management, Active Directory as an Authentication Source, IIS as a web server) is required

- Extend – using these same “out of the box” components an additional application tier server can be added
- Custom – the limitation with the Read to Run! and Extend options is that the alternative is a fully custom installation. The use of the “out of the box” components is all or none.

So a Test/Sandbox environment where you need Single Sign On or SSO/IIS must also provide a separate database install for Configuration Management and Authentication Source – including manually configuring those components.

5. CONFIGURATION

5.1 SSO with IIS

To configure ICA 11 with IIS for SSO, the base document is

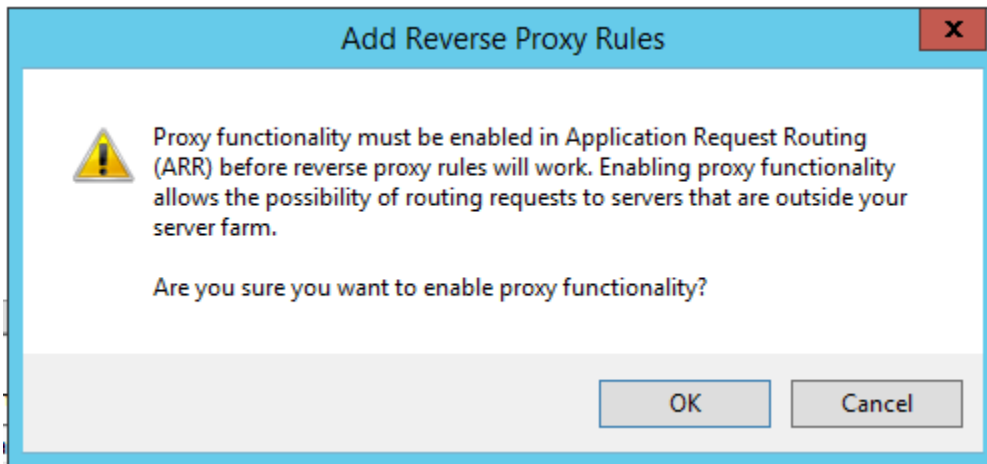
IBM Cognos Analytics: Setting up a Gateway Install Using Microsoft's Internet Information Services

which can be found here: <http://www-01.ibm.com/support/docview.wss?uid=swg21976435>

Also note that as of 1 August 2016, much of the above document has now been incorporated into the ICA 11 Installation and Configuration Guide, but lacks any screen shots or other visuals. See later in this document for the link to IBM Cognos online documentation.

The following are additional tips and tricks that expand on what is included in the documents mentioned, above:

- In setting up the Reverse proxy in IIS on W2012R2, it pops up with a dialog that is not included in the Cognos or 3rd party version of the steps (as they assume IIS 7 vs. IIS 8.5)



Select OK.

- The test URL listed in section 4.4, step 13 is incomplete:
http://<Server1_Gateway>:80/ibmcognos/bi/ - will likely result in a blank page or possibly challenge by IE for user credentials.

The correct test URL should be either

http://<Server1_Gateway:80>/ibmcognos/bi/v1/disp - this is hitting the gateway interface

The following will also work, but is hitting the “glass” interface, not the gateway interface

http://<Server1_Gateway>:9300/bi/ - this is the URI for the “glass” interface (which does not require a Gateway)

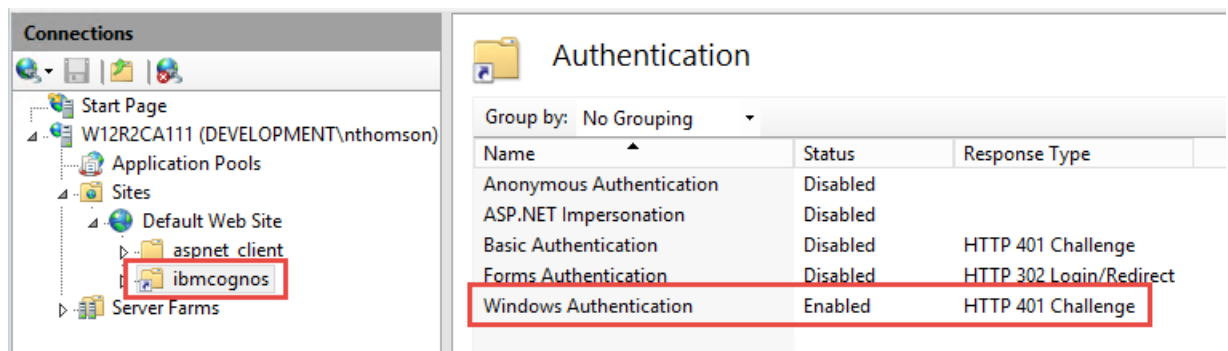
Both of these will bring up the challenge/response IBM Cognos UI (vs. windows or IE).

The full SSO URL is a call to the gateway, then a redirect to the reverse proxy:

http://w12r2ca111/ibmcognos/cgi-bin/cognosisapi.dll?b_action=xts.run&m=portal/main.xts&m_redirect=/ibmcognos/bi/

There will be more discussion on this in the QueryVision SharePoint Web Parts configuration.

- Setting Cognos Configuration for SSO (e.g. setting singleSignOnOption for Active Directory) is unchanged from IC 10.x.
- For IIS ensure that the ibmcognos virtual directory is set up as follows for SSO authentication



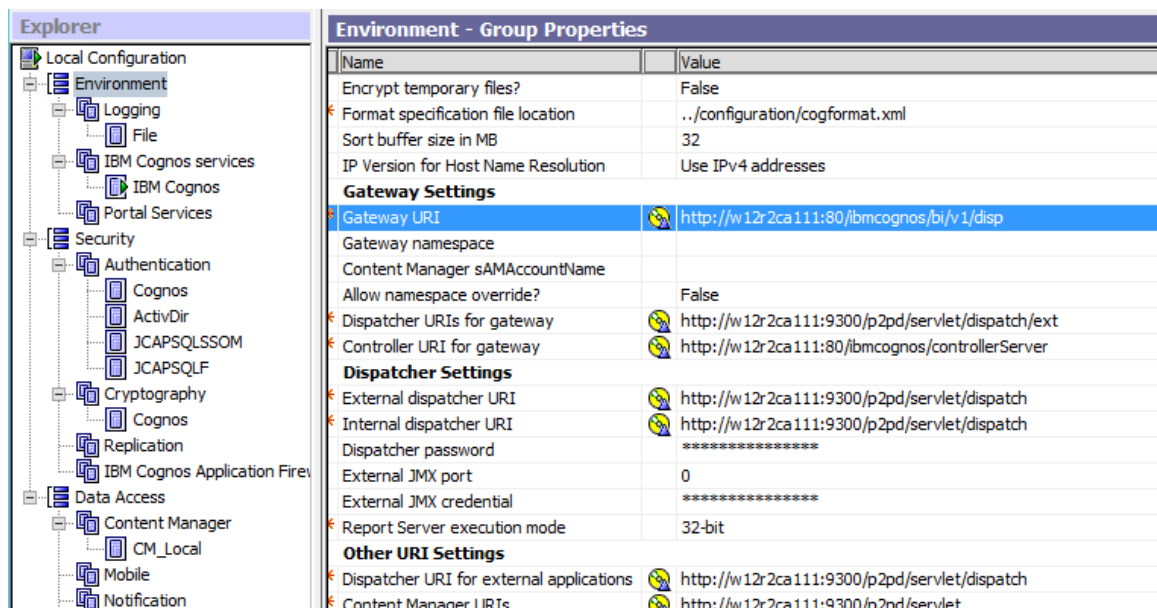
Name	Status	Response Type
Anonymous Authentication	Disabled	
ASP.NET Impersonation	Disabled	
Basic Authentication	Disabled	HTTP 401 Challenge
Forms Authentication	Disabled	HTTP 302 Login/Redirect
Windows Authentication	Enabled	HTTP 401 Challenge

And that the ibmcognos\bi and ibmcognos\cgi-bin also have the same setting (should happen by inheritance).

If Forms Authentication is also included it should also be set to Disabled

- The Guide does not show what the final Cognos Configuration Environment settings should be.

The following is an example the correct final Cognos Configuration settings:



Name	Value
Encrypt temporary files?	False
Format specification file location	../configuration/cogformat.xml
Sort buffer size in MB	32
IP Version for Host Name Resolution	Use IPv4 addresses
Gateway Settings	
Gateway URI	http://w12r2ca111:80/ibmcognos/bi/v1/disp
Gateway namespace	
Content Manager sAMAccountName	
Allow namespace override?	False
Dispatcher URIs for gateway	http://w12r2ca111:9300/p2pd/servlet/dispatch/ext
Controller URI for gateway	http://w12r2ca111:80/ibmcognos/controllerServer
Dispatcher Settings	
External dispatcher URI	http://w12r2ca111:9300/p2pd/servlet/dispatch
Internal dispatcher URI	http://w12r2ca111:9300/p2pd/servlet/dispatch
Dispatcher password	*****
External JMX port	0
External JMX credential	*****
Report Server execution mode	32-bit
Other URI Settings	
Dispatcher URI for external applications	http://w12r2ca111:9300/p2pd/servlet/dispatch
Content Manager URIs	http://w12r2ca111:9300/p2pd/servlet

The default setting for the Gateway URI of <http://localhost:9300/bi/v1/disp> will work in many cases, but it is not what IBM Cognos uses internally and will not work when launching some IBM Cognos content via URL requests.

- If users do not use the specific SSO URL:

http://w12r2ca111/ibmcognos/cgi-bin/cognosisapi.dll?b_action=xts.run&m=portal/main.xts&m_redirect=/ibmcognos/bi/

they will be challenged for UID/PWD.

Examples of URLs which will access the Cognos Portal, for which users will be challenged for include:

http://Server1_Gateway:80/ibmcognos/bi/v1/disp

http://Server1_Gateway:9300/bi/

5.2 Content Manager

Note: if using the “custom” installation option, the default Content Manager database entry will be DB2. This does not mean that DB2 was installed. If not using DB2 a replacement such as SQL Server needs to be specified.

SQL Server Developer edition is a good choice as a Content Manager for a Test/Sandbox configuration, with the added advantage of supporting Microsoft SSAS cubes.

Configuring SQL Server for ICA 11 has not changed from 10.x with the exception of the JDBC driver location. Suggested settings for creating the content store in Microsoft SQL Server" in the Installation and Configuration PDF file: *inst_cr_winux.pdf*

5.2.1 JDBC driver for CM and Report Queries vs. CAP

Cognos access to the CM uses JDBC, so ensure you select the correct version of the Microsoft JDBC drivers (QueryVision used sqljdbc4.jar – dated 11/17/2015) which must be placed in a different location for ICA 11.

<installation folder>\Drivers

example: D:\Program Files\ibm\cognos\analytics\drivers

vs. IC 10.X

<installation folder>\webapps\p2pd\WEB-INF\lib

example: D:\Program Files\ibm\cognos\analytics\webapps\p2pd\WEB-INF\lib

Notes:

- The new ICA 11 driver location is only for JDBC access for report queries and for the 0.X Content Manager access. JDBC jar files to support Custom Authentication Providers still go into the ...WEB-INF\lib folder
- While the Custom Authentication Provider (CAP) SDK is very fussy about the JDBC drivers being built with the same JRE version (ICA JRE 1.8/8.0), the core platform is not. This is why sqljdbc4.jar can be used in the ...drivers folder where sqljdbc42.jar is required for CAPs.

6. SAMPLES

There are a number of samples for ICA 11, including:

- IBM_Cognos_Samples.zip – samples of the new interactive reports, revised “Active” reports and new dashboards. This uses Dynamic Query/JDBC drivers

Note: the new Interactive Reports make use of the RAVE Visualizations. The samples .zip file contains two “packages” to import. If you import the reports without the visualizations the reports will fail with a visualization error

There are two “import”s required:

- ◇ Samples - the reports
- ◇ Visualizations – the RAVE visualization templates/components
- IBM_Cognos_Samples_CQ_Legacy.zip – samples using non dynamic query
- IBM_Cognos_Samples_DQ_Legacy.zip – samples using dynamic query

7. LEGACY TOOLS AND A PORTAL

Information on enabling the legacy client tools and legacy (Cognos Connection) portal can be found here with the document: IBM Cognos Open Mic Cognos Analytics 11 – Part 1

<http://www-01.ibm.com/support/docview.wss?uid=swg27048317&aid=1>

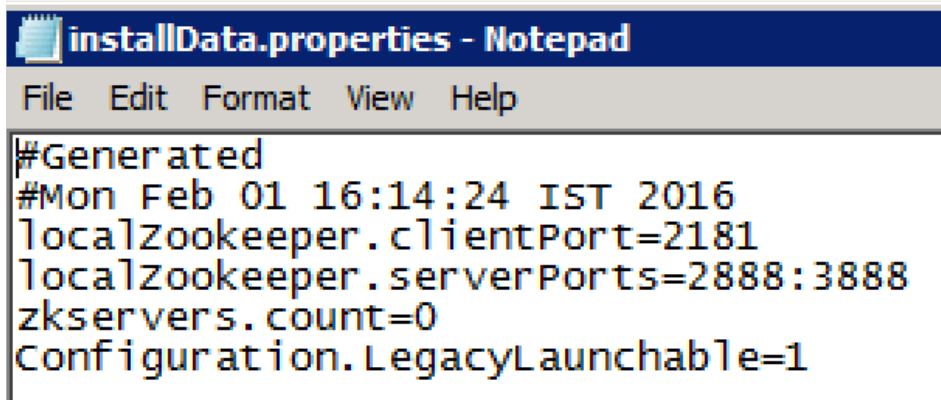
7.1 Legacy Client tools

Legacy client tools are disabled by default for the “Ready!” install option and enabled by default for the “Custom” option.

To enable or disable

- Edit the file: <install location>/configuration/installData.properties

Add the entry: Configuration.LegacyLaunchable=1



```
installData.properties - Notepad
File Edit Format View Help
#Generated
#Mon Feb 01 16:14:24 IST 2016
localZookeeper.clientPort=2181
localZookeeper.serverPorts=2888:3888
zkservers.count=0
Configuration.LegacyLaunchable=1
```

- Restart the services.

With the core BI Server the following legacy tools are available via new/other:

- Analysis Studio
- Drill Through Definitions
- Event Studio
- Query Studio
- Workspace (Dashboards)

Adds the following to the Profile Menu

- My Inbox

- My Watch Items (will be added to Cognos Analytics)

Adds the following to the Manage Menu

- New Jobs

With the integration of other servers, the following is the complete list of legacy clients can include:

- Cognos Metrics Studio – some ICA documentation suggests this will not be supported with customers being pointed to other IBM/Cognos products for metrics
- Cognos PowerPlay – as of CA 11.0.3 this is supposedly supported, but installation and configuration information is not yet available
- Cognos Planning – announced, but not yet supported as fo 11.0.3

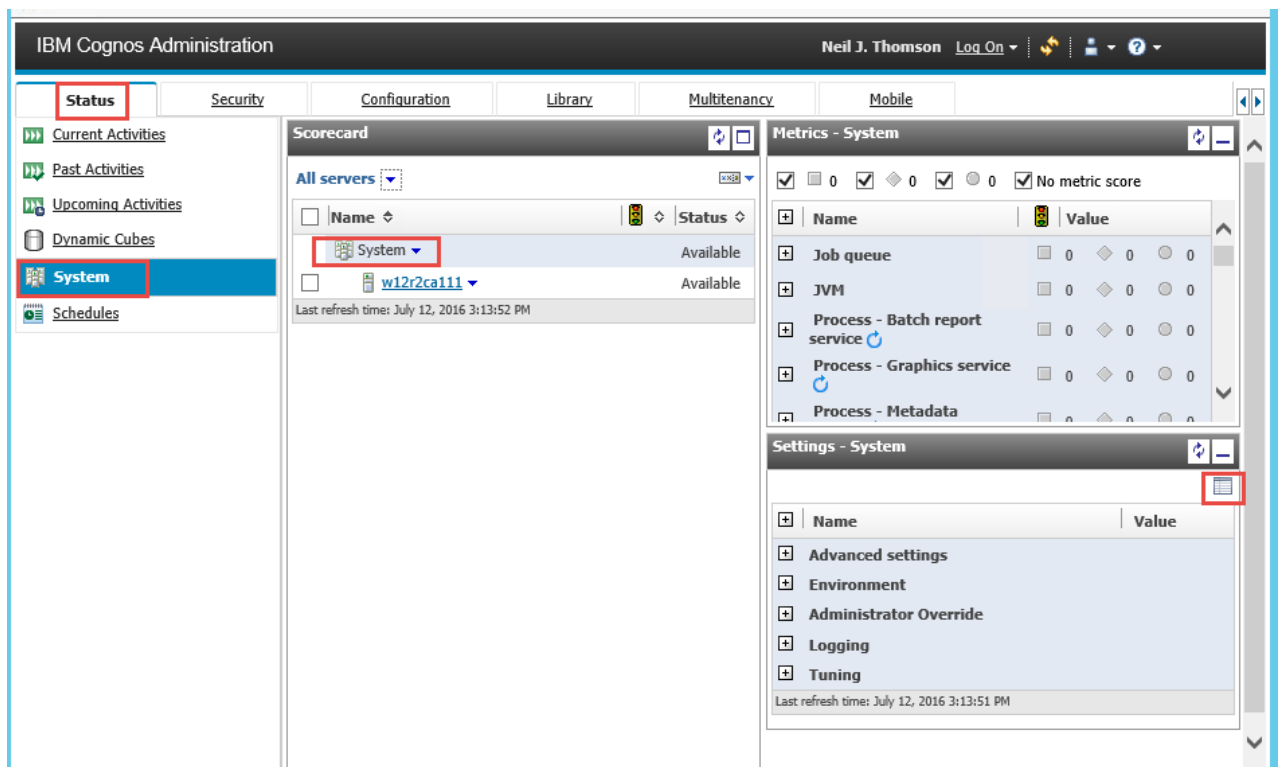
7.2 Legacy Portal

While not widely published, access to a limited functionality of the Cognos Connection Portal can be enabled. Not that this requires a separate URL to access it, which is not included in a control in the ICA 11 portal/welcome/home page.

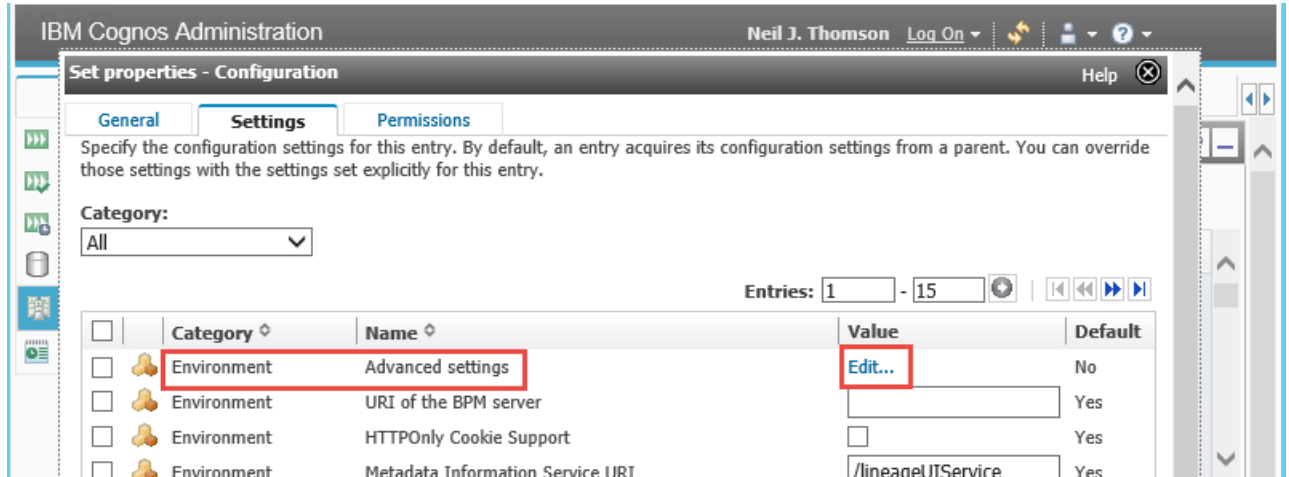
What is not clear is how long this interface will be available. Some of the discussions by IBM/Cognos has been that this interface continues until all the features (Admin and User) are fully supported in the new “native” ICA 11 portal/home UI.

To enable/disable:

- Go to the full Administration Console -> Status Tab -> System
- Ensure the System row is selected in the Scorecard panel and the click the “set properties” icon in the Settings – System panel



The screenshot shows the IBM Cognos Administration interface. At the top, the user is identified as Neil J. Thomson. The main navigation bar includes tabs for Status, Security, Configuration, Library, Multitenancy, and Mobile. The left sidebar contains a tree view with categories like Current Activities, Past Activities, Upcoming Activities, Dynamic Cubes, System (highlighted), and Schedules. The central area is divided into three panels: 'Scorecard' (showing a table with 'System' selected), 'Metrics - System' (displaying various system metrics), and 'Settings - System' (displaying configuration options like Advanced settings, Environment, Administrator Override, Logging, and Tuning). A red box in the 'Settings - System' panel highlights the 'set properties' icon.



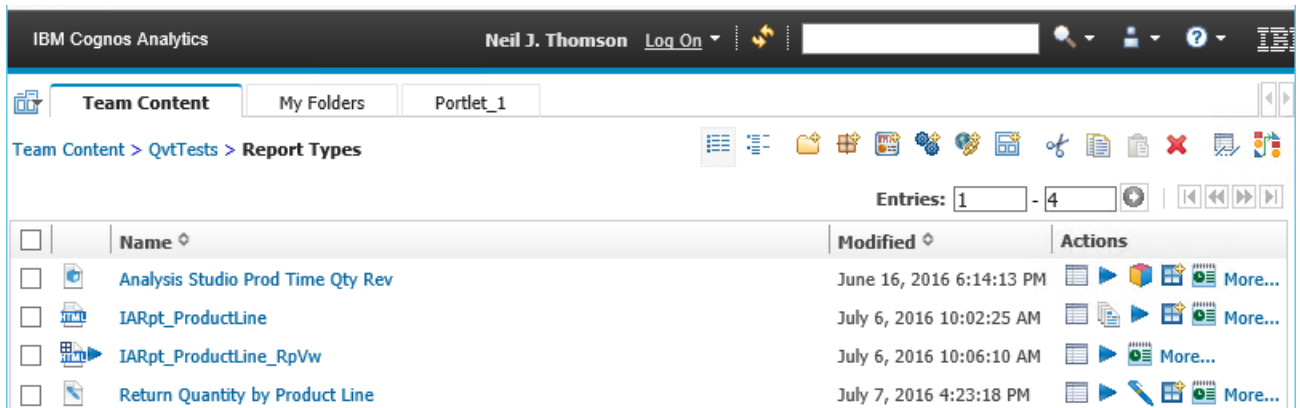
- For the Environment Advanced settings, click edit and add the following to enable the legacy portal
 - ◇ parameter: portal.disablecc
 - ◇ value: false

The legacy portal can be access via the following URL (assuming gateway installation):

http://<server>:80/ibmcognos/bi/v1/disp?b_action=xts.run&m=portal/cc.xts

for example:

http://w12r2ca111:80/ibmcognos/bi/v1/disp?b_action=xts.run&m=portal/cc.xts



The legacy portal provides the following subset of the 10.X portal:

- Run reports with the “Classic” report viewer. For ICA 11 reports marked as “interactive” they will be run without the interactive tool bars and other features.

Note – as Report Studio and Business Insight/Workspace Advance no longer exist (even as legacy studio tools/clients) options to edit Reports (including “Active Reports”) with either Report Studio or Business Insight/Workspace Advance are not included – nor is there an option in this portal to edit with the new ICA 11 Report Studio/Authoring client

- Run and edit existing Analysis Studio, Query Studio, Event Studio, Workspace/Business Insight Dashboards
- Schedule reports
- Search with the basic Name/Description search.

- View and edit portal pages – plus the ability to create new portal pages, which was announced as not being available.
- Support for Tabs (see Portlet_1)
- Administration of Tenants (new interface sometime in the future)
- Create Shortcuts
- Other functions (see icons in tool bar)

What is not available:

- Launch – the Launch icon/drop down has been removed - Launch any of the studios to create a new report is not available – this can be done from the CA “native” portal/UI.

8. POWERPLAY INTEGRATION WITH ICA 11

As of Aug 2016, documentation on integration of ICA 11 and PowerPlay is covered in the following Technote:

<http://www-01.ibm.com/support/docview.wss?uid=swg21987412>

In conversation with IBM Tech Support, there are some additional changes and considerations:

A primary point is that all the steps are mandatory.

Versions required:

- IBM Cognos Analytics 11.0.3 or higher
- IBM PowerPlay Server 10.2.2 FP5 or higher is required – the version of PP server which can be downloaded (recommend 64 bit) is the RTM version. For example:

IBM Cognos Business Intelligence PowerPlay Server 64-bit 10.2.2 Microsoft Windows Multilingual (CN1ZAML)

Filename: bi_ppl_svr_64b_10.2.2_win_ml.tar.gz

To achieve PowerPlay FP5 requires application of the general BI server 10.2.2 FP5

10.2.2-BA-CBI-Win64-FP005

FileName: up_bisrvr_winx64h_10.2.6105.50_ml.tar.gz

The PowerPlay server can be installed on the same machine in a different root folder location or on a separate server:

- ICA 11 installed at: D:\Program Files\ibm\cognos\analytics
- PowerPlay Server installed at: D:\Program Files\ibm\cognos\c10_64

Follow the Technote directions for generating the folders/files from the PP server installation to create the content of InteropDeployment and copying over to the ICA 11 folders

The following are addition steps not included in the Technote

- Shut down the ICA 11 server through Cognos Configuration
- If using a Gateway for ICA 11 (which is likely for most customers and required for QueryVisions products), then the Gateway URI in Local Configuration\Environment must be of the form:

<http://<named server:port>/ibmcognos/bi/v1/disp>

NOT:

<http://<named server>:9300/bi/v1/disp>

This URI is the URI to the “glass” micro-service authentication and should NOT be used as a Gateway URI

- Rename the Local Configuration\Environment\IBM Cognos services entry from “IBM Service” to something else (e.g. “IBM ICA Service”)
- Start the ICA 11 service
- Make the changes in the PowerPlay version of Cognos Configuration as per the Technote
- In addition, make the following changes:
 - ◇ Rename the Local Configuration\Environment\IBM Cognos services entry from “IBM Service” to something else (e.g. “IBM PP Service”)
 - ◇ Add a Notification Database (Local Configuration\Data Access\Notification for PowerPlay (the default for ICA 11 is the same database as used for the Content Manager Content Store)
 - ◆ The simplest solution is to point to the same database as for the ICA 11 Content Manager
 - ◇ Make sure that all URL/URI references are for named servers (e.g. w12r2ca111), not “localhost”
 - ◇ If installing PP on the same server as ICA 11, a number of ports need to be changed:
 - ◆ Change references to the Cognos App Server (default is 9300) to be at least a count of 50 different than for ICA 11 (e.g. 9400)

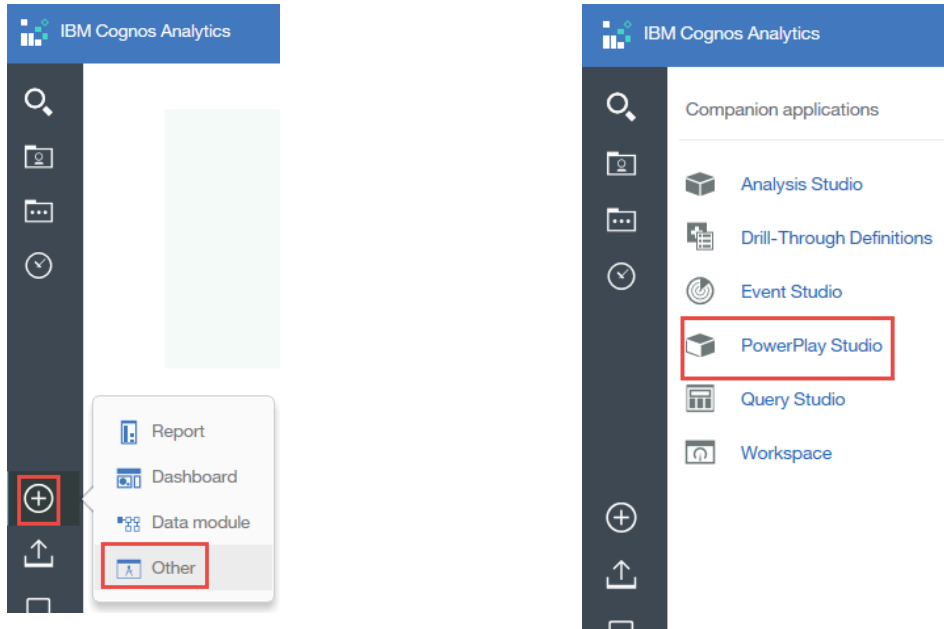
Name	Value
Deployment files location	../deployment
Data files location	../data
* Map files location	../maps
Temporary files location	../temp
Encrypt temporary files?	False
* Format specification file location	../configuration/cogformat.xml
Sort buffer size in MB	32
* IP Version for Host Name Resolution	Use IPv4 addresses
Gateway Settings	
* Gateway URI	http://w12r2ca111:80/ibmcognos/bi/v1/disp
Gateway namespace	Content Manager sAMAccountName
Allow namespace override?	False
* Dispatcher URIs for gateway	http://w12r2ca111:9400/p2pd/servlet/dispatch/...
* Controller URI for gateway	http://w12r2ca111:80/ibmcognos/controllerServer
Dispatcher Settings	
* External dispatcher URI	http://w12r2ca111:9400/p2pd/servlet/dispatch
* Internal dispatcher URI	http://w12r2ca111:9400/p2pd/servlet/dispatch
Dispatcher password	*****
External JMX port	0
External JMX credential	*****
* Report Server execution mode	32-bit
Other URI Settings	
* Dispatcher URI for external applications	http://w12r2ca111:9400/p2pd/servlet/dispatch
* Content Manager URIs	http://w12r2ca111:9300/p2pd/servlet
Font Settings	

- ◆ Change the Environment\Logging -> Locallog server port number from the default: 9362 to at least 50 ports higher: e.g. 9462

- Start the PowerPlay server

A quick sanity test of the health of the integration is to do the following:

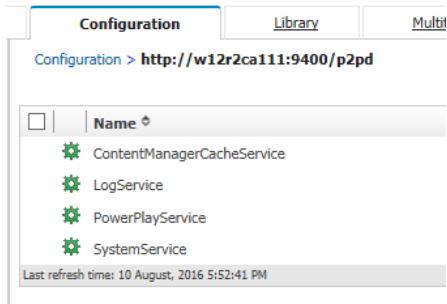
- Select the New icon and then the Other entry, you should see the following:



The Technote also outlines how to update the Monitor Service. If installed on the same server, when selecting the Configuration->Dispatchers and Services you should see two dispatchers – one for ICA 11 (e.g. 9300) and one for PP (e.g. 9400). The following is the list of services you should see under each. The following is the correct list of the ICA 11 dispatcher, which will include the monitor service:

Name	Modified	Actions
AgentService	10 August, 2016 3:38:31 PM	More...
AnnotationService	10 August, 2016 3:38:32 PM	More...
BatchReportService	10 August, 2016 3:38:32 PM	More...
ContentManagerCacheService	10 August, 2016 3:38:31 PM	More...
ContentManagerService	10 August, 2016 3:38:31 PM	More...
DeliveryService	10 August, 2016 3:38:31 PM	More...
EventManagerService	10 August, 2016 3:38:32 PM	More...
GraphicsService	10 August, 2016 3:38:31 PM	More...
HumanTaskService	10 August, 2016 3:38:32 PM	More...
IdVizService	10 August, 2016 3:38:32 PM	More...
JobService	10 August, 2016 3:38:32 PM	More...
LogService	10 August, 2016 3:38:31 PM	More...
MetadataService	10 August, 2016 3:38:32 PM	More...
MobileService	10 August, 2016 3:38:32 PM	More...
MonitorService	10 August, 2016 3:47:56 PM	More...

The following is the correct list for the PP dispatcher



Update the Monitor Service as directed.

At this point you can now copy over PowerPlay datasources and the samples from 10.2.2 (if required). and do the final test to see that PowerPlay studio is now functional

Note that in ICA 11 Data Source Connections, when adding an PP datasource (e.g. an MDC file) the creation workflow/wizard will allow you to automatically generate package and publish it to the Content Store (is a checkbox in the last “dialog”)

8.1 Known Issues

8.1.1 Administration Console for PowerPlay

The Administration Console tab for PowerPlay currently will not render properly in IE 11. It will render properly in Firefox

9. CHANGES TO MULTI-SERVER INSTALLATION

For ICA-11 there are multiple scenarios where separate dispatchers are involved where a specific sequence needs to be followed for installation, configuration and first service start or the overall system may not work correctly.

- Expanding an existing single server installation of ICA to place additional ICA 11 components on other servers
- Performing a multi-server installation of ICA 11 without having first created a single server installation
- Installing/integrating the IBM Cognos 10.2.2 version of PowerPlay Server and the ICA 11 platform

The following are the official documents on this topic from IBM

- Missing functionality in Multi-Server setup with CM installed on its own
<http://www-01.ibm.com/support/docview.wss?uid=swg21977419>

which includes a link to:

Installing IBM Cognos Analytics – Distributed Environment.doc

Note: In both the Technote and the document, IBM uses the term “Installation” and “Running the Installation” to cover 3 separate steps:

- a) Install the files (run the InstallAnywhere installer)
- b) Configure the component (using Cognos Configuration and possibly other file changes)
- c) Start the component/service with Cognos Configuration

The critical factor is that in any of the 3 scenarios listed above that the ICA 11 installation/server hosting the primary Content Management service – the primary “Data Tier” - be running and the

Content Manager URI in Cognos Configuration for separate component be correctly updated before starting (for the first time):

- Any of the ICA 11 components/services running on separate servers
- PowerPlay server running on the same or separate server.
- Any ICA 11 component which includes installation of a dispatcher (e.g. Application Component) on the same server, but in a different folder

A general rule of thumb – if the installation of a Cognos Component results in its own instance of Cognos Configuration, bringing it online after steps a) and b) must follow this sequence.

Possible Typo: The document section “Installing the Application Tier (Dispatcher)” step 11 appears to have an important typo:

11. Launch Cognos Configuration update the references required.

Make sure the Content Manager URI is pointing to the Data Tier Content manager URI. Save and start the Data Tier component.

QueryVision believes this should have read:

11. Launch Cognos Configuration update the references required.

Make sure the ICA 11 service with the Primary Data Tier is running.

Make sure the Content Manager URI is pointing to at least the primary Data Tier “Content Manager URI”.

Save and start the ~~Data~~ **Application** Tier component.

9.1.1 Server start order

If the “IBM Cognos” service has been renamed (e.g. to “IBM ICA Cognos”), particularly for the Cognos Server running the Content Manager, changes to the Cognos Configuration parameters may result in an error “Cannot find service “IBM Cognos”” when restarting that server.

The solution is to stop all the Cognos Servers (e.g. ICA 11 and PP), then restart starting with the server with the primary Content Manager service

10. A WORD ON THE SDKS

Public statements are that there have been no changes to the SDKs, but may be in the future.

While there have been no new SDKs or major rework of the existing SDKs and no documentation updates, the “so called” IC 10.2.2 SDK files which are packaged with ICA 11 are actually updated as follows

SDK APIs and Classes

- New classes – a new “exploration” class which is the “spec” class/object used for the new ICA 11 dashboard entities.
- New properties – the **authoredReport** class has added a **runInAdvancedViewer** property which indicates if the report is to be run as an Interactive Report or as a “Classic Viewer” report.

This was verified by inspecting the cognosdotnet<xxx>.dlls

URL Requests

While many URL requests work without change a significant number have changed parameters or entirely new structures

11. USEFUL LINKS

Preview Webinar – provides demo of ICA 11 plus Q&A sessions that cover off differences between 10.X and ICA 11 plus what the immediate road map of features, feature updates and improvements will be in the 2017 timeframe:

ICA 11 documentation HTML/PDF is no longer installed with the product. It can be found here:

<http://www-01.ibm.com/support/docview.wss?uid=swg27047187>

Preview webinar on SlideShare :

<http://www.slideshare.net/senturus/preview-cognos-analytics-version-11-webinar>

IBM Cognos Open Mic Cognos Analytics 11 – Part 1

<http://www-01.ibm.com/support/docview.wss?uid=swg27048317&aid=1>

IBM Cognos Open Mic Cognos Analytics 11 – Part 2

<http://www-01.ibm.com/support/docview.wss?uid=swg27048417&aid=1>

Enabling single signon to IBM Cognos Analytics 11 with Active Directory

<http://www-01.ibm.com/support/docview.wss?uid=swg21975302>

Critical issues for IBM Cognos Analytics 11.0.0

<http://www-01.ibm.com/support/docview.wss?uid=swg27047185>

Cognos Analytics will not use the JRE embedded in Windows installations if a JAVA_HOME is set

<http://www-01.ibm.com/support/docview.wss?uid=swg21973643>

Enabling Cognos Connection for Admin in Cognos 11/Administering multitenancy in Cognos Analytics

<http://www-01.ibm.com/support/docview.wss?uid=swg21982015>

Forums of CA 11

Linked In

<https://www.linkedin.com/groups/4248297> (IBM Cognos Analytics)

<https://www.linkedin.com/groups/3563103> (IBM Cognos 10)

<https://www.linkedin.com/groups/2049724> (IBM Cognos Software)

Cognois - Forums: Analytics and Upgrading to Cognos Analytics

<http://www.cognoise.com/>

New Cognos Analytics Forum, seeing quite a bit of traffic:

<http://www.cognoise.com/index.php/board,184.0.html>

CogKnowHow.com - not many recent postings

IBM developerWorks - Cognos Forums (list of forums)

Cognos 10 forums (some Cognos Analytics 11 content here)

- some CA 11 comments in Cognos Enterprise BI forum, none in the Cognos BI 10 forum

<https://www.ibm.com/developerworks/community/forums/html/category?id=33333333-0000-0000-0000-000000000164>

Analytics 11 forum (in watsonanalytics vs. developerworks – needs IBM login)

https://community.watsonanalytics.com/discussions/spaces/63/view.html?cm_mc_uid=75060293138314703320291&cm_mc_sid_50200000=1474561863

The IBM Knowledge Centre for Analytics 11 – which provides early detailed technical documentation – particularly install, config, etc.

http://www.ibm.com/support/knowledgecenter/SSEP7J_11.0.0/com.ibm.swg.ba.cognos.ca_new.doc/c_ca_nf_11_0_x.html#concept_ntx_nyz_bw

The communities page which provides videos, demos and links to more technical overview documentation

<https://www.ibm.com/communities/analytics/cognos-analytics/>

Entries showing up in the Cognos BI 10 forum

<https://www.ibm.com/developerworks/community/forums/html/forum?id=11111111-0000-0000-0000-000000002335>

ITToolBox BI Cognos Forum

<http://businessintelligence.ittoolbox.com/groups/technical-functional/cognos-/>

CA Fix lists (examples)

11.0.2.0 <http://www-01.ibm.com/support/docview.wss?uid=swg27048098>

11.0.3.0 <http://www.ibm.com/support/docview.wss?uid=swg27048406>

ICA RFE (Request for Feature Enhancement)

https://www.ibm.com/developerworks/rfe/?BRAND_ID=401

12. 11.0.4/11.05 CHANGES

Note: with IBM Cognos Analytics 11, IBM has effectively combined software feature updates with bug fixes and security updates. In pragmatic terms, this means that only the most recent version of IBM Cognos 11 is supported. Currently that is 11.0.5 with 11.0.6 having been released Mar 17, 2017 which.

QueryVision supports 11.0.5 and is currently in the process of validating 11.0.6

Specified here:

http://www.ibm.com/support/knowledgecenter/SSEP7J_11.0.0/com.ibm.swg.ba.cognos.ca_new.doc/c_ca_nf_11_0_x.html#concept_ntx_nyz_bw

Note that the installation and configuration changes won't be complete until 11.0.5.

The following lists the configuration for a new 11.04+ IIS installation, including sso

http://www.ibm.com/support/knowledgecenter/SSEP7J_11.0.0/com.ibm.swg.ba.cognos.inst_cr_winux.doc/t_sso_actdirserver.html#t_sso_actdirserver

For SSO and IIS configuration in general there are two paths

- Clean 11.0.4 installation
- Upgrade from 11.0.3 to 11.0.4 provides two paths.

The difference is in where the gateways are pointed to and there is a simpler approach to installing 11.04 basic IIS installation for SSO

Upgrade from 1103 to 1104

http://www.ibm.com/support/knowledgecenter/SSEP7J_11.0.0/com.ibm.swg.ba.cognos.inst_cr_winux.doc/t_iis_1103_1104.html#iis_1103_1104

The largest change is the Dispatcher URIs in Cognos Configuration

Configuration	11.0.3	11.0.4/11.0.5
Gateway URI	http://w12r2ca111:80/ibmcognos/bi/v1/disp	http://w12r2ca111:80/ibmcognos/bi/v1/disp
Dispatcher URIs for gateway	http://w12r2ca111:9300/p2pd/servlet/dispatch/ext	http://<server>:9300/bi/v1/disp
Dispatcher URI for external applications	http://w12r2ca111:9300/p2pd/servlet/dispatch	http://w12r2ca111:9300/bi/v1/disp

The following is an example of an IBM Cognos 11.0.5 BI Server installed on a single machine (includes Gateway, Application server and Content Manager server)

Environment - Group Properties

Name	Value
Deployment files location	../deployment
Data files location	../data
* Map files location	../maps
Temporary files location	../temp
Encrypt temporary files?	False
* Format specification file location	../configuration/cogformat.xml
Sort buffer size in MB	32
IP Version for Host Name Resolution	Use IPv4 addresses
Gateway Settings	
* Gateway URI	http://w12r2ca111:80/ibmcognos/bi/v1/disp
Gateway namespace	
Content Manager sAMAccountName	
Allow namespace override?	False
* Dispatcher URIs for gateway	http://w12r2ca111:9300/bi/v1/disp
* Controller URI for gateway	http://w12r2ca111:80/ibmcognos/controllerServer
Dispatcher Settings	
* External dispatcher URI	http://w12r2ca111:9300/p2pd/servlet/dispatch
* Internal dispatcher URI	http://w12r2ca111:9300/p2pd/servlet/dispatch
Dispatcher password	*****
External JMX port	0
External JMX credential	*****
* Report Server execution mode	32-bit
Other URI Settings	
* Dispatcher URI for external applications	http://w12r2ca111:9300/bi/v1/disp
* Content Manager URIs	http://w12r2ca111:9300/p2pd/servlet
Font Settings	

QueryVision QvtConfig.xml settings to support 11.0.4/11.0.5

Configuration	11.0.4/11.0.5
Gateway URI	http://w12r2ca111:80/ibmcognos/bi/v1/disp
CA Authentication Gateway URI	http://w12r2ca111:80/ibmcognos/cgi-bin/cognosisapi.dll
Dispatcher URI for external applications	http://w12r2ca111:9300/p2pd/servlet/dispatch

The following is an example of configuration for 11.0.4 and 11.0.5 in QvtConfig.xml for a crnserver

```
<AccessURIs>
| <AccessURI>
| | <Name>Gateway URI</Name>
| | <URI>http://w12r2ca111:80/ibmcognos/bi/v1/disp</URI>
| | <BaseURI>http://w12r2ca111:80/ibmcognos/bi</BaseURI>
| </AccessURI>
| <AccessURI>
| | <Name>CA Athentication Gateway URI</Name>
| | <URI>http://w12r2ca111:80/ibmcognos/cgi-bin/cognosisapi.dll</URI>
| | <BaseURI>http://w12r2ca111:80/ibmcognos</BaseURI>
| </AccessURI>
| <AccessURI>
| | <Name>Dispatcher URI for external applications</Name>
| | <URI>http://w12r2ca111:9300/p2pd/servlet/dispatch</URI>
| | <!--<URI>http://w12r2ca111:9300/bi/v1/disp</URI> -->
| | <BaseURI>http://w12r2ca111:9300</BaseURI>
| </AccessURI>
</AccessURIs>
```

12.1 Issues with Report Images and HTML Saved Outputs

Applies to:

IBM Cognos 10.2.2

IBM Cognos Analytics 11.0

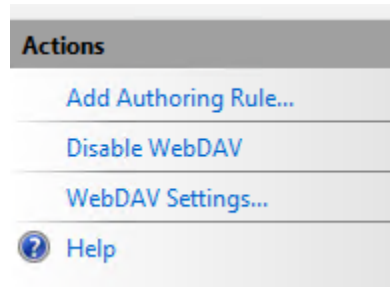
Formatting problem for saved outputs for 10.2.2

- Use cognosisapi.dll (works fine) vs. cognos.cgi (doesn't resolve stylesheets, fonts or images)
- Need to update the configuration for the 10.2.2 server for QvtConfig.xml – confirmed both from browser on Cognos server and from separate machine to use cognosisapi.dll

Formatting problem for saved outputs in 11.0.5, including error on attempting to add or update a graphic

- Need to add WebDav support to Cognos. See here: [Add Image From Report Studio](#)
- How to is defined here: [Enable WebDAV](#). Instructions need modification for IIS 8.5 – follow [Enabling WebDAV Publishing by Using IIS Manager](#).

- ◇ Double click on the WebDAV icon.
- ◇ On the right, select WebDAV Settings under the list of actions:



Set the Property Behavior -> *Allow Anonymous Property Queries* property to *true*

To set up the folder location, this has moved from

`<install folder>/webcontent/samples/images`

to

`<install folder>/webcontent/bi/samples/images`

Enable Anon access.

then add authoring rule as per the instructions in the Cognos file to Add and Authoring Rule a allow All Content, All users Permissions: Read (but not source or write).

Do an IISRESET and also restart the Cognos server

This fixes the problem. However, the report mechanism has changed. It now stores the image using an absolute URL vs. relative (e.g. `../samples/images/file` -> `http://<server>/.....webcontent/bi/samples/images/file`). This works.

The ICA 11 server did not have WebDAV installed as part of the IIS configuration.

- Close the IIS manager
- Add to the install. This needs to be added under
Server Roles -> Web Server (IIS) -> Web Server -> Common HTTP Features – WebDAV Publishing (add check)
- Do an iisreset and open IIS Manager – will now see webdav under the IIS for the default web site features view