

QueryVision SharePoint Web Parts for IBM Cognos

README

Version 2016.1

Table of Contents

1.	INTRODUCTION	1
2.	IBM COGNOS ANALYTICS 11/SHAREPOINT INTEGRATION LIMITATIONS	1
2.1	Navigating and selecting IBM Cognos Analytics 11 dashboards	1
2.2	Rendering ICA 11 interactive reports and dashboards	1
2.3	Embedding the IBM Cognos Analytics 11 native portal in SharePoint pages	1
2.3.1	JavaScript Alert	2
2.3.2	Saved Output	3
2.4	Authentication	3

1. INTRODUCTION

Provides last minute updates, known issues, limitations and work arounds.

This is current to IBM Cognos Analytics 11.0.3 (Aug 30, 2016)

2. IBM COGNOS ANALYTICS 11/SHAREPOINT INTEGRATION LIMITATIONS

QueryVision Web Part provides full support for IBM Cognos Analytics 11, with some limitations due to the evolving state of the new IBM Cognos Analytics 11 Portal/User Interface which impacts:

- Navigating and selecting IBM Cognos Analytics 11 dashboards with the QueryVision Content Manager Browser web part
- Rendering IBM Cognos reports in interactive mode (new for ICA 11) or new dashboards is not supported for QueryVision's Report Viewer or Favorites web parts
- Embedding via iframes, including QueryVision's Web Parts
- Authentication for Challenge/Response and Service Account web parts

2.1 Navigating and selecting IBM Cognos Analytics 11 dashboards

IBM Cognos Analytics 11 has introduced a new Dashboard technology which introduced new IBM Cognos object types to the Content Manager. The QueryVision Content Manager Browser web part currently cannot detect or show these dashboards for selection as this would break QueryVision backward compatibility with IBM Cognos 10.X servers.

If there is sufficient customer interest we will provide an IBM Cognos Analytics 11+ version of the QueryVision Web Parts for IBM Cognos

Work Around

- Use the QueryVision Cognos Component web part to navigate using the IBM Cognos Analytics 11 portal or to specify a specific Dashboard using a IBM Cognos SID (System Identifier)

2.2 Rendering ICA 11 interactive reports and dashboards

ICA 11 has introduced a new "interactive" mode option for Reports, plus a new dashboard technology.

The QueryVision Report Viewer and Favorites web parts will render Reports marked as interactive will be rendered in non-interactive mode (e.g. 10.x compatible). Neither part is capable of rendering the new ICA 11 dashboards

ICA 11 has introduced new objects and object properties, including the new dashboard object type and a new report property (runInAdvancedViewField) which is shown in a report property sheet as "Run with full interactivity" (True/Yes: interactive, False/No: non-interactive (10.X compatible)

Support for these new objects/properties would break QueryVision backward compatibility with IBM Cognos 10.X servers

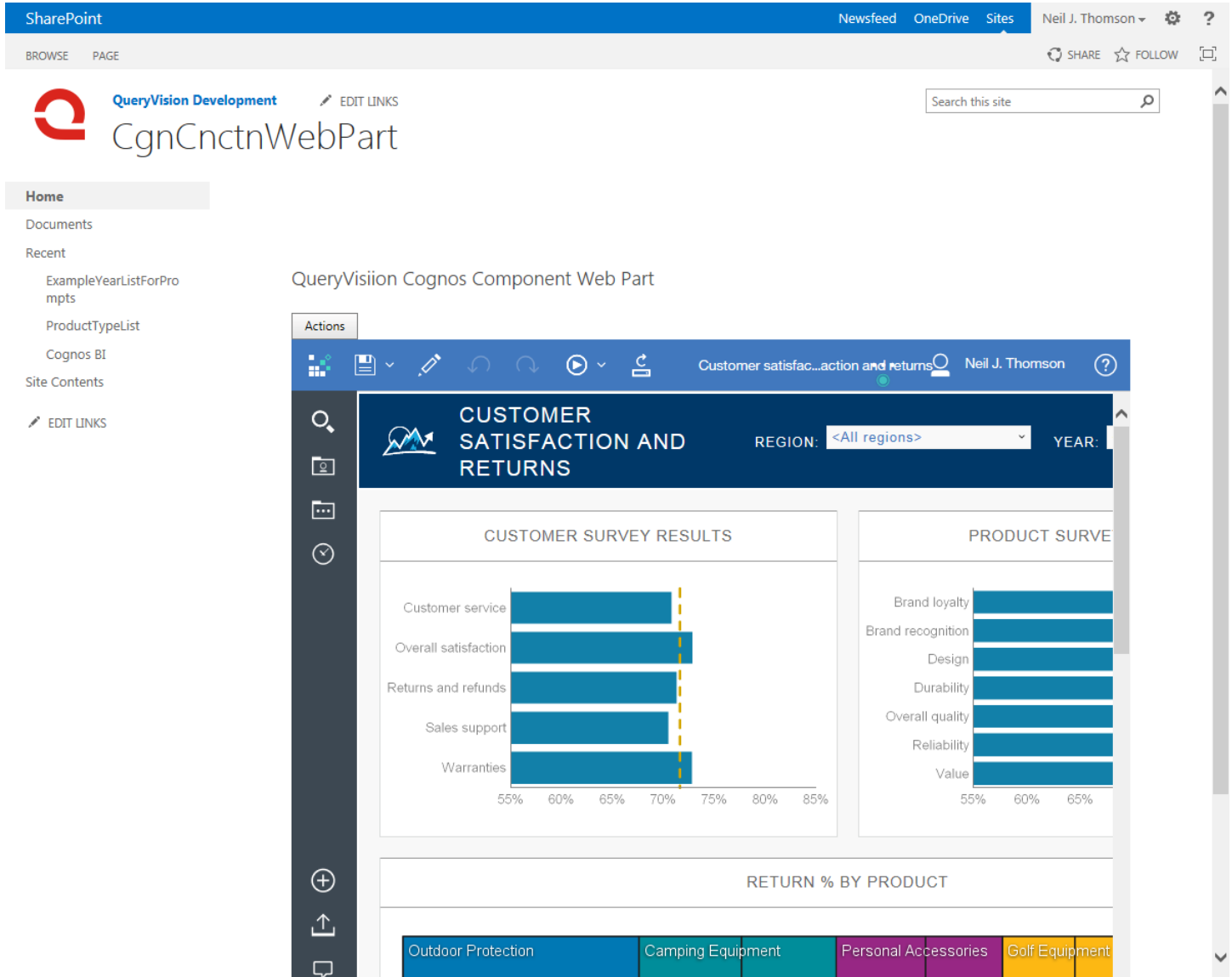
If there is sufficient customer interest we will provide an IBM Cognos Analytics 11+ version of the QueryVision Web Parts for IBM Cognos

Work Around

- Use the QueryVision Cognos Component web part to navigate using the IBM Cognos Analytics 11 portal or to specify a specific interactive Report or new Dashboard using a IBM Cognos SID (System Identifier)

2.3 Embedding the IBM Cognos Analytics 11 native portal in SharePoint pages

The IBM Cognos Analytics portal interface can be embedded in a web application via an HTML iframe. QueryVision Web Parts use this approach for the Cognos Component Web Part:



The screenshot shows a SharePoint page with a QueryVision Cognos Component Web Part. The page title is "CgnCnctnWebPart". The web part displays a dashboard titled "CUSTOMER SATISFACTION AND RETURNS". The dashboard includes filters for "REGION: <All regions>" and "YEAR:". It contains three charts: "CUSTOMER SURVEY RESULTS", "PRODUCT SURVEY", and "RETURN % BY PRODUCT".

Category	Percentage
Customer service	~72%
Overall satisfaction	~73%
Returns and refunds	~71%
Sales support	~70%
Warranties	~72%

Category	Percentage
Brand loyalty	~62%
Brand recognition	~63%
Design	~64%
Durability	~65%
Overall quality	~66%
Reliability	~67%
Value	~68%

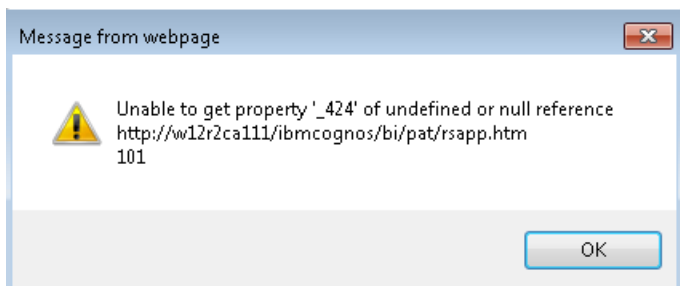
Product Category	Return %
Outdoor Protection	~15%
Camping Equipment	~18%
Personal Accessories	~22%
Golf Equipment	~25%

However, IBM Cognos support for embedding this interface has some limitations as it is likely that IBM has not yet optimized this UI for use in iframes

Note, these issues only affect the QueryVision Cognos Component web part. The Report Viewer and Favorites web parts are not affected as they currently support the "classic" report viewer (the IBM Cognos Analytics 11 UI uses the "new" report viewer which is integrated in the new portal)

2.3.1 JavaScript Alert

If there is other behavior or post backs on the page while a report or dashboard is rendering, the page may throw up a JavaScript alert referring to null reference errors. This occurs occasionally in IE 11 and Firefox. This does not impact the actual rendering or behavior of the report, but does interrupt the user experience.



QueryVision has taken steps to minimize this during web page editing through preventing rendering of the report or other Cognos content while the web page is being edited.

Work arounds:

- Minimize non-Cognos content on the SharePoint page – particularly controls that allow post backs – on pages with the QueryVision Cognos Component Web Part

If this is occurring sufficiently to cause user issues, contact QueryVision.

2.3.2 Saved Output

For IBM Cognos Analytics 11 the “default action” for reports is for a report is dependent whether there are saved outputs and whether the report is a new (for IBM Cognos Analytics 11) “interactive” vs. “non-interactive report”.

If a report is non-interactive (e.g. an upgraded 10.x report) and there is saved output, then the action is “view most recent report”. This cannot currently be changed – see [IBM Cognos Analytics – Reports – default action](#) for details.

If using QueryVision’s Cognos Component Web Part using the Render Target option of “In Web Part” – if there is a saved output for an interactive report - this will currently cause a Permission/Access Denied error for the Cognos UI, which will fail silently. The IBM Cognos Analytics Portal UI will no longer allow selecting and running of any reports/content working, it may even fail to render the Portal at all.

The issue does not occur when running the IBM Cognos Analytics 11 Portal directly (not through SharePoint) or when launched from SharePoint into a separate window

Work Arounds:

- **Use the QueryVision Report Viewer or Favorites web parts for running and viewing saved outputs.**
 - ◇ Use the Cognos Component web part to embed the IBM Cognos Analytics 11 Portal only for interactive reports and IBM Cognos Analytics 11 dashboards
- **Launch IBM Cognos Analytics 11 Portal in a separate window** - using the Cognos Component Web Part: Run Target property “New Window” or “Redirect (New Window)” option

2.4 Authentication

Symptoms: The QueryVision Report Viewer, Favorites Viewer or Cognos Component web parts challenge for user ID and Password (IBM Cognos Analytics 11 prompt page) in spite of the user being logged on.

Applies to: QueryVision Cognos Authentication (challenge user for id/password) or QueryVision Service Account authentication techniques and related Web Parts.

This does not apply to any of the QueryVision Single Sign On options.

For the QueryVision Cognos Authentication (challenge user for id/password) or QueryVision Service Account authentication web parts are used, the recommended option for a IBM Cognos Analytics 11 server configuration in QvtConfig.xml is to set the SetBrowserPassport authentication option to the following:

```
<SetBrowserPassport>PassportInUrl</SetBrowserPassport>
```

However, this option is currently not supported by IBM for the IBM Cognos Analytics 11 portal or reports/dashboards shown in the portal if the user's first SharePoint page with IBM Cognos content (e.g. home/landing page) has the following scenario:

- Report Viewer:
 - ◇ User has the ability to launch the new ICA 11 Reporting Authoring tool from the QueryVision Report Viewer web part
- Cognos Components Viewer
 - Is configured to the new IBM Cognos Analytics portal or any content using the portal
 - ◇ Welcome page
 - ◇ Home page
 - ◇ [Analytic] (Interactive) Report
 - ◇ [Analytic] Dashboard

If any of the above scenarios apply, then set the SetBrowserPassport parameter in QvtConfig.xml for the IBM Cognos Analytics 11 server to the value: "SetCookie"

```
<SetBrowserPassport>SetCookie</SetBrowserPassport>
```

and follow the installation and configuration guide for the files and configuration required on the Cognos Server to support this option (e.g. SetCookie.jsp)