

QueryVision Installation & Configuration

Title: **SSONRD HTM for Single Sign On**

Document ID: **DocID001**
Version: **1.0**
Last Saved: **2017-05-10 15:49:00**
Document Status: **Draft**
Author: **Neil Thomson**
Product/Release

Abstract: Installation and Configuration Instructions for ssonrd.htm - the HTM
(Comments) version of ssonrd.jsp

This document contains information, which is deemed proprietary to QueryVision. It may not be distributed outside of QueryVision without the prior consent of the Chief Technology Officer or CEO.

Detailed History of Changes

Ver.	Date	Who	Detailed description of Changes
1.0	10May2017	NJT	Created

Table of Contents

1.	INTRODUCTION	1
2.	INSTALLATION & CONFIGURATION	1
2.1	SSONRD.HTM.....	1
2.1.1	Debug	1
2.1.2	Production.....	2
2.1.3	Customising Endpoint URL re-write	2
3.	CONFIGURATION.....	3
3.1	QvtConfig.xml	3
3.2	QvtSsoParams.xml	3
3.3	qvtSSODynamic.html.....	4

1. INTRODUCTION

The SSONRD file used in QueryVision Web Parts Single Sign-On (SSO) solutions. It is part of the web page redirect “chain” which authenticates the user's browser session and the web parts with a Cognos authentication ticket (CAM_Passport).

The version that ships with the **QueryVision Web Parts for IBM Cognos** is a Java Server Page (JSP) – ssonrd.jsp.

The version introduced here is an HTM page which uses HTML and JavaScript to perform the equivalent functionality.

The HTM version may be required in cases where a firewall or other web or network security will not allow access to the SSONRD.JSP version at the following location:

http:// or https://<cognos_server>:9300/p2pd/ssonrd.jsp

Note: only one of ssonrd.jsp or ssonrd.htm can be used

2. INSTALLATION & CONFIGURATION

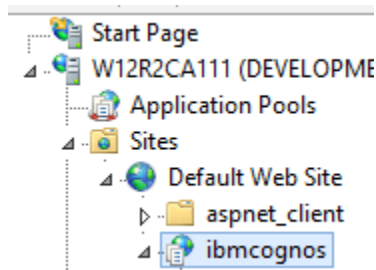
The use of the HTM file requires:

- Installation and configuration of the ssonrd.htm file on the Cognos server
- Changes to the following files:
 - ◇ QueryVision SharePoint configuration file QvtConfig.xml on all SharePoint Web Front End servers
 - ◇ QvtSsoParams.xml on the Cognos server(s)
 - ◇ qvtSSODynamic.html on the Cognos server(s)

"<!DOCTYPE html>".

2.1 SSONRD.HTM

The HTM version can be installed and accessed anywhere in the IBM Cognos folder space that is configured for your web server, with the preferred URL being the following, assuming the default virtual directory naming in IIS of ibmcognos



HTTP:// or HTTPS:// <cognos_server>:<port>/ibmcognos/ssonrd.htm

The virtual directory location corresponds to the webcontent folder:

Example location: D:\Program Files\ibm\cognos\analytics\webcontent

2.1.1 Debug

The debug version of the file can be used for troubleshooting.

Once the page has been called by the Cognos Authentication Manager (CAM), it will pause and wait for the user to click the 'Click for final redirect', presenting the CAM_Passport, Retry and Endpoint URL as received from the CAM and the final Endpoint URL which will show a different target URL if the optional re-write feature is configured (more details, below).

QueryVision SSONRD.HTM - Debug Version

Click for final redirect

CAM_Passport: MTsxMDE6ZmRhNDVmZDgtZGNIYy1kZjRhLTc2NDEtMzRiMjk1YjIwOGVjOjA1MjcyNTEzNDY7MDszOzA7

Retry: undefined

Received Endpoint URL: http://w28r2ent207/Cognos BI/SSO_CA11.aspx

Final Endpoint URL: http://w28r2ent207/Cognos BI/SSO_CA11.aspx

Please Wait...



2.1.2 Production

The production version will only display "Please Wait..." and the spinner (shown at the bottom of the debug screenshot, above) while the SSO request is being processed (a few seconds)

2.1.3 Customising Endpoint URL re-write

The HTM version provides the same ability to re-write the endpoint URL as described for the JST version in the **QueryVision Web Parts Installation Guide**, Section **10.5.1 Managing the receiving URL for SSO credentials**.

The format is slightly different that in SSONRD.JSP to conform to JavaScript vs. Java syntax, but the content is the same.

In the section below, the option is enabled, with example code block "A" uncommented to allow HTTP to https rewrite.

```
// in_to_out_URI allows for remapping of URLs used internally
// by SharePoint to the externally supported URLs used by
// SharePoint and other components such as load balancers.
// SharePoint will typically internally work in http://
// while external access is configured for https://
// SharePoint Alternate Access Mapping provides
// more sophisticated remapping
//
// Two examples are included, but ensure there is only one definition for
//   in_to_out_URI
// A) for simple http:// to https://
// B) for SharePoint AAM mapping
// A) remove comments from code for http:// -> https:// substitution
//
in_to_out_URI = [
  ["http://", "https://"],
];
```

```
//
// B) remove comments from code for SharePoint Alternate Access Mapping
// (AAM) type remapping. This does AAM type remapping from
// internal URIs to alternate URIs
/*
in_to_out_URI = [
  ["http://poc.validation.spfarm.intra.com:8653", "https://poc.validation.spfarm.intra.com"],
  ["https://poc.validation.spfarm.intra.com:9653", "https://poc.validation.spfarm.intra.com"]
];
*/
```

3. CONFIGURATION

The following files need to be configured or updated:

- The QvtSsonParams.xml to point to the ssonrd.htm file
- The QvtConfig.xml and qvtSSODynamic.html file to change the redirect method from POST to GET

Typically, the default configuration for IIS for the location

```
http:// or https:// <cognos_server>:<port>/ibmcognos/ssonrd.htm
```

is configured such that doing a POST (vs. GET) operation will result in a 405 error "Method Not Allowed".

While this can be changed in IIS Manager, the QvtConfig.xml and qvtSSODynamic.html files can be changed to use GET vs. POST

3.1 QvtConfig.xml

To change the SSO path for GET vs. POST:

In the QvtConfig.xml file, search for the <SSOBridgeCommand> for the target Cognos server and change the line from

```
<SSOBridgeCommand>%3Fb_action%3Dxts.run%26m%3Dportal%2Fbridge.xts%26c_env%3DQvtSsoParams.xml%26c_mode%3Dpost</SSOBridgeCommand>
```

to

```
<SSOBridgeCommand>%3Fb_action%3Dxts.run%26m%3Dportal%2Fbridge.xts%26c_env%3DQvtSsoParams.xml%26c_mode%3Dget</SSOBridgeCommand>
```

3.2 QvtSsoParams.xml

The QvtSsoParams.xml file is located the Cognos server(s) at the following location:

Example file location: D:\Program Files\ibm\cognos\analytics\templates\ps

This requires the location of the ssonrd file to be configured for the URL location for the ssonrd.htm file.

Change the line:

```
<CRNenv c_cmd="http://YourCognos8Server:9300/p2pd/ssonrd.jsp">
```

To:

```
<CRNenv c_cmd="http://<YourCognos8Server>:<port>/ibmcognos/ssonrd.htm">
```

Note: if using SSL then http needs to change to https

3.3 qvtSSODynamic.html

The qvtSSODynamic.html file is used only for the SSO Dynamic mode. It is located in the webcontent folder on disk:

Example location: D:\Program Files\ibm\cognos\analytics\webcontent

To change the SSO path for GET vs. POST:

Locate the following block of code (approx. line 75) and change from:

```
var url='cgi-  
bin/cognos.cgi?b_action=xts.run&m=portal/bridge.xts&c_env=QvtSsoParams.xml'+ '&endpointurl='+encodeURIComponent(  
    nent(endpointUrl)+'&CAMNamespace='+tsp;  
    if(retry=='1'){  
        url = url + '&retry=1'+ '&c_mode=post';  
    }  
    else {url=url + '&c_mode=post';}
```

to

```
var url='cgi-  
bin/cognos.cgi?b_action=xts.run&m=portal/bridge.xts&c_env=QvtSsoParams.xml'+ '&endpointurl='+encodeURIComponent(  
    nent(endpointUrl)+'&CAMNamespace='+tsp;  
    if(retry=='1'){  
        url = url + '&retry=1'+ '&c_mode=get';  
    }  
    else {url=url + '&c_mode=get';}
```